




## EMEL – ITS

**Exceptional Mobility,  
Greater City!**

- 
1. A little bit of History...
  2. Mobility Department - Team ITS
  2. Challenges
  3. What we are Doing
    - 2.1 Modernization
    - 2.2 Traffic Model
    - 2.3 SIM.Lx

1994



### The Beginning

Responsible for the planning and fiscalization of the on-street parking

2017



### GIRA has started

- . Bike sharing public service
- . 60 km of bicycle lanes
- . 81 dock stations
- . 500 bicycles

2018



### Parking overview

- . Over 75 000 On- parking spaces
- . Over 3 000 parking meters
- . Over 90 000 resident "distics"
- . Over 6 000 Off-street Parking spaces

2019



### Mobility Department

With the increase of competences, EMEL launched the new mobility department





## Scope of Expertise



Traffic Engineering



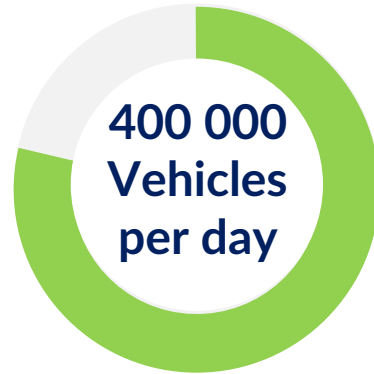
ITS Operations – Contract Management



IoT Sensorization

# Challenges!!!

## Key Figures







### New Traffic Controller

Substitution of all traffic controllers for technology of last generation with OCIT protocol



### New Sensors

Substitution of the old loops for new wireless and radar sensors



### New Intersection Programs

Update of all traffic programs

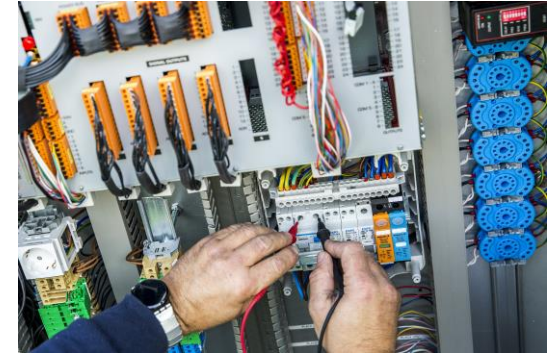


### LED Optic Monitorization

Possibility to know remotely which LED optic is not working



# Modernization.



1

## New Traffic Model - PTV

Built from Scratch, which include all roads, traffic lights, public buses

2

## Macroscopic Level

Built from a strategic point of View

3

## Different Inputs

Loads of Data were used to build the model

4

## Reference for the future

All traffic studies will derive from the model Database for SIM.Lx



14 000 Nodes coded



57 000 Links coded



All Road and Movement typology coded



Peak hours coded

「Traffic Model.」



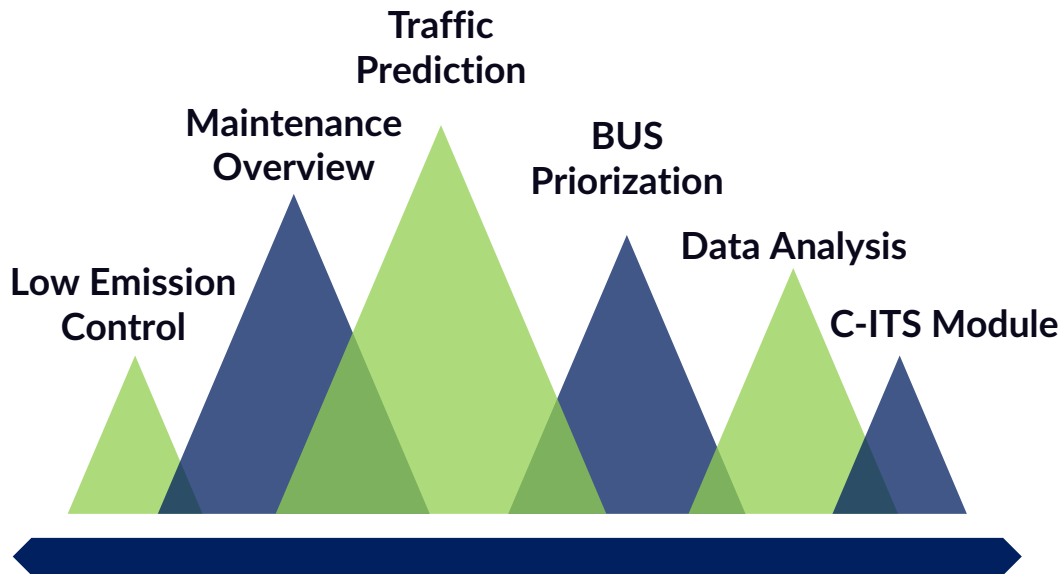
Brand Registered



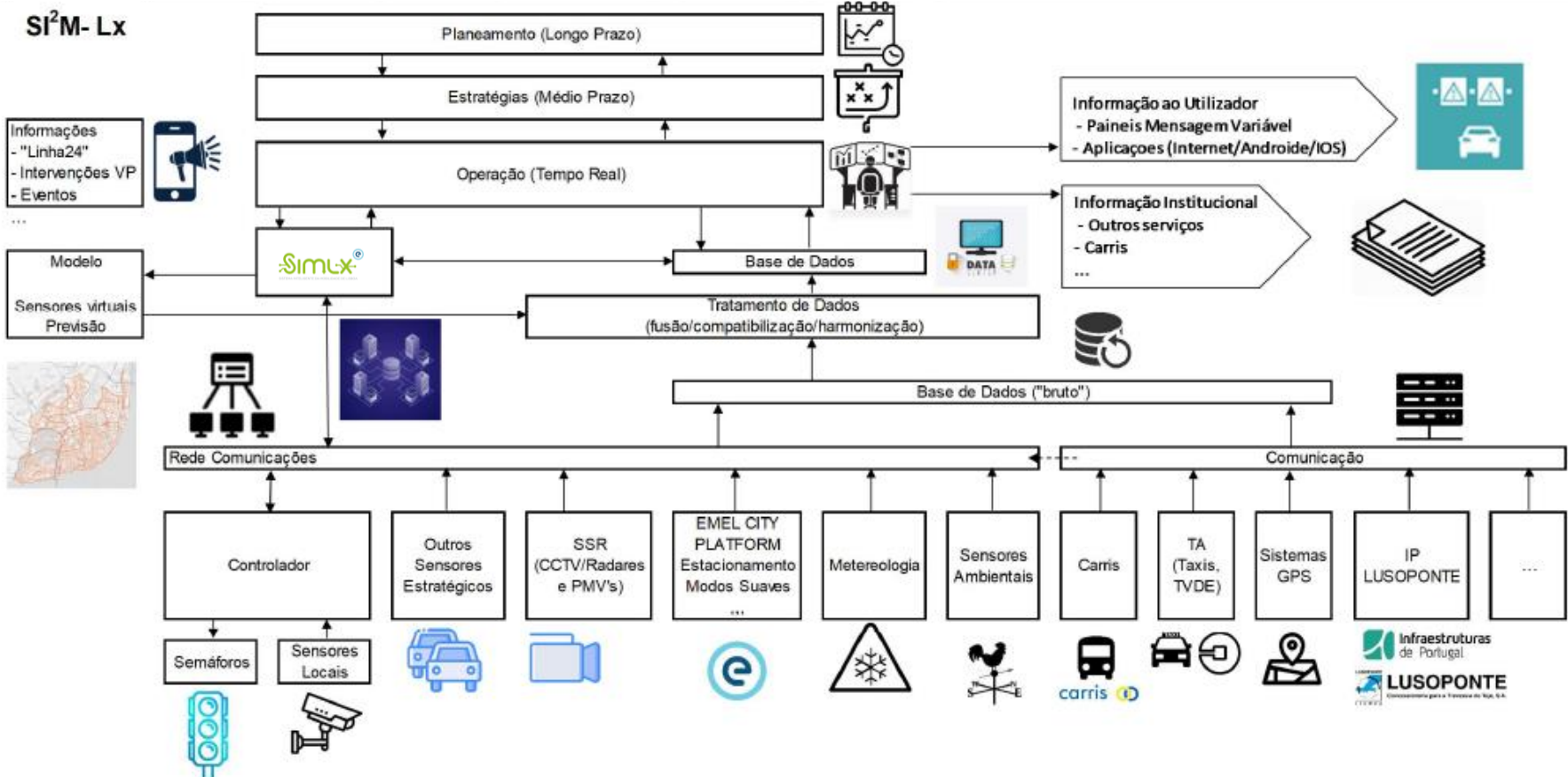
OCIT Protocol



Safe and reliable at all Levels



Powered by EMEL.



Thank you.

Contacts  
[miguel.c.santos@emel.pt](mailto:miguel.c.santos@emel.pt)

